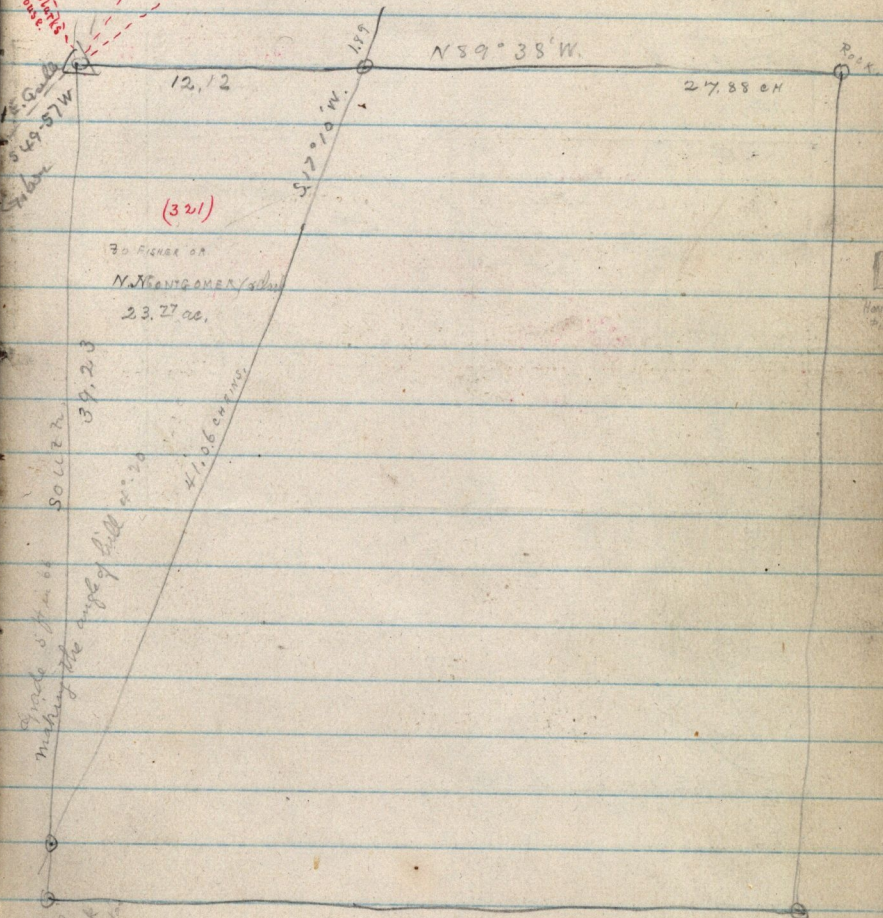


October 20-1885.

H. BERRETT, N. W. 1/4 Sec. 29 T. 7 N. R. 1 E

N 35° 0' 18" W
 N 55° 56' E
 West gate Liberty School
 N 41° 34' E
 Woolf Pk.
 New School
 N 60° 30' W
 1600' 0" 1/2
 House

s.w. cor. New Brick School



(321)

70 Pieces of
 N. Thompson's
 23.27 ac.

Circle 3 ft in dia
 making the angle of hill 41° 20'

1/2 mile south
 to F. 1. Shear Creek
 on back of Mountain

373
 12.08
 15.81
 9486
 9486
 104344

434
 368
 6.6